

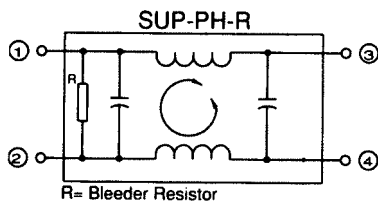
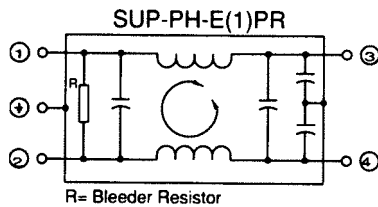
SUP-P□H-EPR-0 (Faston)

SUP-P□H-EPR-2 (Solder)

SUP-P□H-EPR-4 (Screw)

- EMI/RFI Noise Filter for Low Band Width Applications
- High μ Core Material
- 20-30dB Attenuation at 10KHz
- 30 Models Designed for Medical Applications
- Available in Faston, Solder and Screw Terminal Styles

Safety Approvals		File No .
UL	: UL-1283	E78644
CSA	: C22.2, No. 8-M1986	LR60681
TÜV	: VDE 0565-3	R9250051
VDE	: VDE0565-3	10529-4730-1001



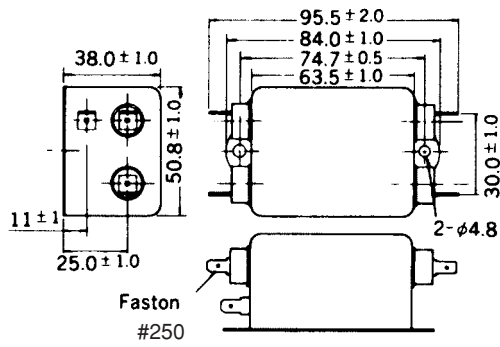
Rated voltage **250VAC**

Safety Standard	Model No.	Rated current (A)	Test voltage	Insulation resistance	Leakage current (at 250Vrms 60Hz)	Voltage drop (max.)	Temperature rise (max.)	Operating temp. range (°C)
	* SUP-P5H-R-0 (2,4)	5	Line to Line 1000Vrms 50/60Hz 60sec	Line to Ground 6000MΩ min. (at 500Vdc)	10 μ A	1.0Vrms	35°C	-25 to +50
	SUP-P5H-EPR-0 (2,4)				0.6mA			
	* SUP-P5H-E1PR-0 (2,4)				70 μ A			
	* SUP-P8H-R-0 (2,4)	8			10 μ A			
	SUP-P8H-EPR-0 (2,4)				0.6mA			
	* SUP-P8H-E1PR-0 (2,4)				70 μ A			
	* SUP-P10H-R-0 (2,4)	10	10 μ A					
	SUP-P10H-EPR-0 (2,4)		0.6mA					
	* SUP-P10H-E1PR-0 (2,4)		70 μ A					
	* SUP-P15H-R-0 (2,4)	15	10 μ A					
	SUP-P15H-EPR-0 (2,4)		0.6mA					
	* SUP-P15H-E1PR-0 (2,4)		70 μ A					
	* SUP-P20H-R-0 (2,4)	20	10 μ A					
	SUP-P20H-EPR-0 (2,4)		0.6mA					
	* SUP-P20H-E1PR-0 (2,4)		70 μ A					
* SUP-P30H-R-4	30	10 μ A						
SUP-P30H-EPR-4		0.6mA						
* SUP-P30H-E1PR-4		70 μ A						

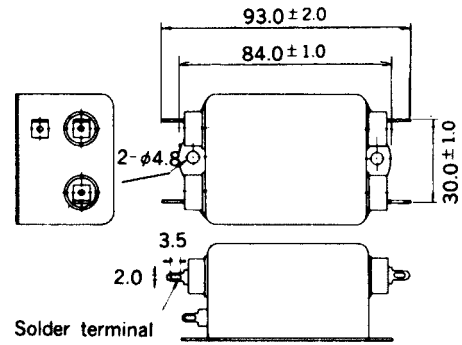
MECHANICAL DIMENSIONS

All Dimentions in mm

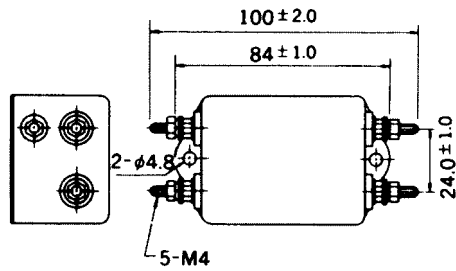
Faston (5, 10, 15, 20A)



Solder (5, 10, 15, 20A)



Screw (5, 10, 15, 20, 30A)



Case size is the same as faston terminal type.