

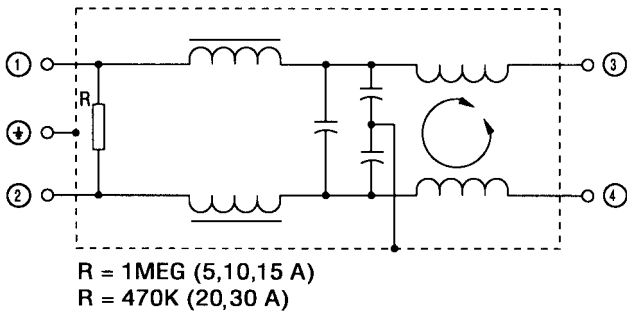
SUP-J□H-ER-4

- Rated 5-30 Ampere at 250VAC
- Common and Normal mode attenuation to 30 MHz
- Bleed Resistor for shock protection




Safety Approvals		File No .
UL	: UL-1283	E78644
CSA	: C22.2, No.8-M1986	LR60681
VDE	: VDE0565-3	10529-4730-1001



SUP-J□H-ER



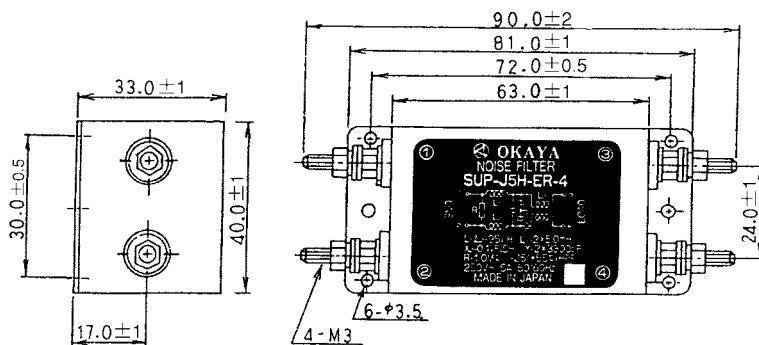
Rated voltage **250VAC**

Safety Standard	Model number	Rated current (A)	Test voltage	Insulation resistance	Leakage current (max.)	Voltage drop (max.)	Temperature rise (max.)	Operating temp range(°C)
  	SUP-J5H-ER-4	5	Line to Line 1000Vrms 50/60Hz 60sec	Line to Ground 6000MΩ min (at 500VDC)	1.0mA (at 250Vrms 60Hz)	1.5Vrms	30°C	-25 to +55
	SUP-J10H-ER-4	10						
	SUP-J15H-ER-4	15	Line to Ground 2000Vrms 50/60Hz 60sec					
	SUP-J20H-ER-4	20						
	SUP-J30H-ER-4	30						

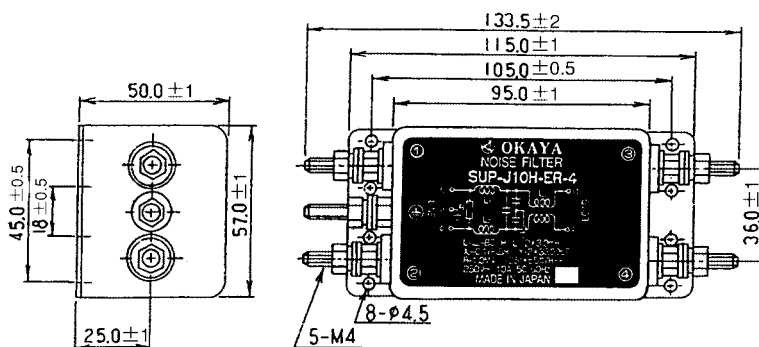
MECHANICAL DIMENSIONS

All Dimentions in mm

(5 A)



(10, 15 A)



(20, 30 A)

