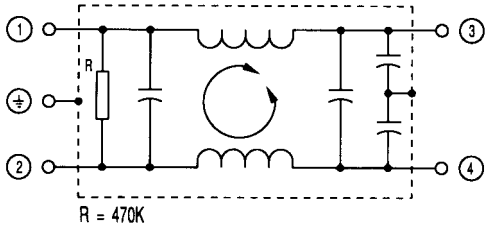


SUP-G H-EPR (Faston)
SUP-G H-EPR-2 (Solder)
SUP-G H-EPR-4 (Screw)

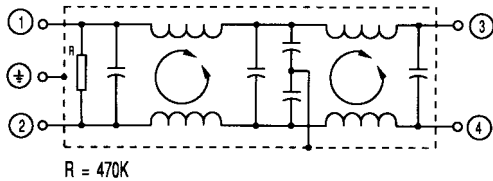
- 20dB attenuation of 2000V, 800nsec. pulses
- Amorphous Alloy core material
- Bleed Resistor for shock protection
- Three Terminal Styles

Safety Approvals		File No .
UL	: UL-1283	E78644
CSA	: C22.2, No. 8-M1986	LR60681
VDE	: VDE0565-3	10529-4730-1001
SEMKO	: SS4432901	8707213

SUP-G□H-EPR (5 AND 10 AMP)



SUP-G□H-EPR (15 AND 20 AMP)



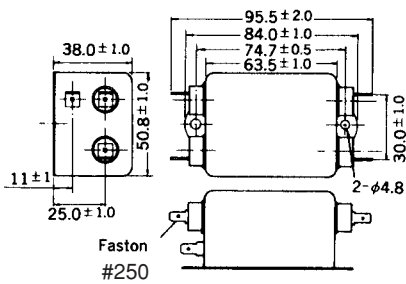
Rated voltage **250VAC**

Safety Standard	Model number	Rated current (A)	Test voltage	Insulation resistance	Leakage current (max.)	Voltage drop (max.)	Temperature rise (max.)	Operating temp range (°C)
	SUP-G5H-EPR	5	Line to Line 1000Vrms 50/60Hz 60sec Line to Ground 2000Vrms 50/60Hz 60sec	Line to Ground 6000MΩ min (at 500VDC)	0.6 mA (at 250Vrms 60Hz)	1.0Vrms	30°C	-25 to +55
	SUP-G5H-EPR-2							
	SUP-G5H-EPR-4							
	SUP-G10H-EPR	10					35°C	-25 to +50
	SUP-G10H-EPR-2							
	SUP-G10H-EPR-4							
	SUP-G15H-EPR	15					-25 to +50	
	SUP-G15H-EPR-2							
SUP-G15H-EPR-4								
	SUP-G20H-EPR	20	-25 to +50					
	SUP-G20H-EPR-2							
	SUP-G20H-EPR-4							

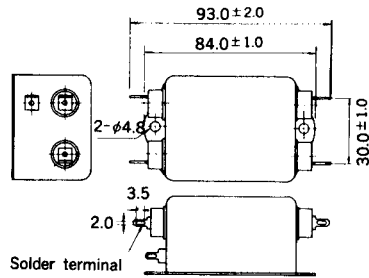
MECHANICAL DIMENSIONS

All Dimintions in mm

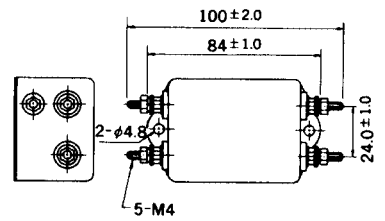
Faston (5A, 10A)



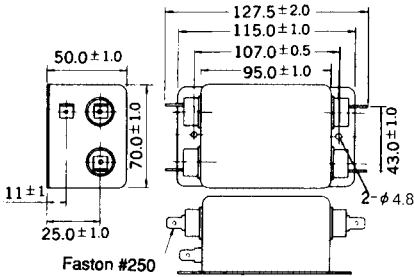
Solder terminal (5A, 10A)



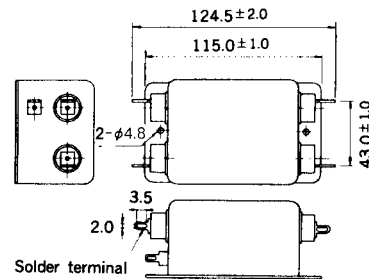
Screw terminal (5A, 10A)



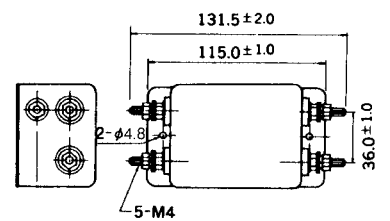
Faston (15A, 20A)



Solder terminal (15A, 20A)



Screw terminal (15A, 20A)



Unit : mm

TVSS characteristics

