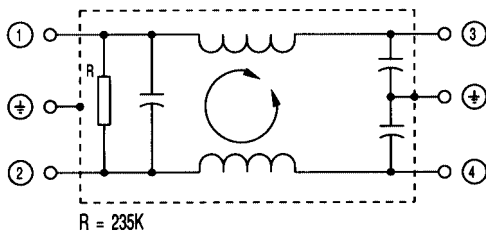


SUP-F□H-ER (Faston)
 SUP-F□H-ER-2 (Solder)

- IEC input connector
- Bleeder Resistor for shock protection
- Normal and Common Mode Attenuation
- Chassis Sealable

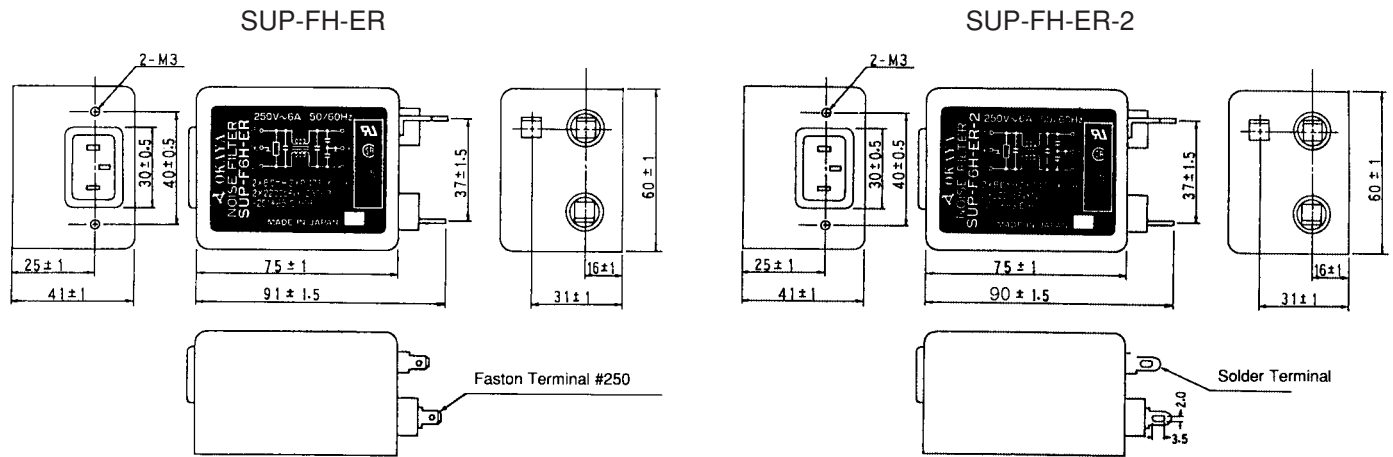
Safety Approvals		File No .
UL	: UL-1283	E78644
CSA	: C22.2, No.8-M1986	LR60681
VDE	: VDE0565-3	10529-4730-1002
SEMKO	: SS443 2901	8815052

SUP-F□H



MECHANICAL DIMENSIONS

All Dimintions in mm



Rated voltage **250V_{AC}**

Safety Standard	Model number	Rated current (A)	Test voltage	Insulation resistance	Leakage current (max.)	Voltage drop (max.)	Temperature rise (max.)	Operating temp range(°C)
	SUP-F3H-ER	3	Line to Line 1000Vrms 50/60Hz 60sec	Line to Ground 6000MΩ min (at 500VDC)	0.5mA (at 250Vrms 60Hz)	1.0Vrms	30°C	-25 to+55
	SUP-F3H-ER-2							
	SUP-F6H-ER	6						
	SUP-F6H-ER-2							
	SUP-F10H-ER	10	Line to Ground 2000Vrms 50/60Hz 60sec					
	SUP-F10H-ER-2							
	SUP-F15H-ER-2	15					35°C	-25 to+50
	SUP-F15H-ER-2							