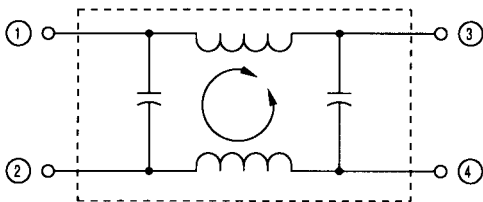


SUP-E□H
 SUP-E□H-0
 SUP-E□H-2

- High performance magnetics for pulse absorption
- 20dB attenuation of 1000V, 800nsec. pulse
- UL544 (UL2601) Medical & Dental Equipment, rating
- Available in Vinyl lead(1~3A), Screw, Faston(-0) and Solder terminals(-2)

Safety Approvals		File No .
UL	: UL-1283	E78644
UL	: UL-544 *	E78644
CSA	: C22.2, No.8-M1986	LR60681
VDE	: VDE0565-3	10529-4730-1001, 1003
SEMKO	: SEN432901	8415187
TÜV	: VDE0565-3	R85074

SUP-E□H



(1, 2, 3A)



(5, 10, 15, 20A)

Rated voltage **250V_{AC}**

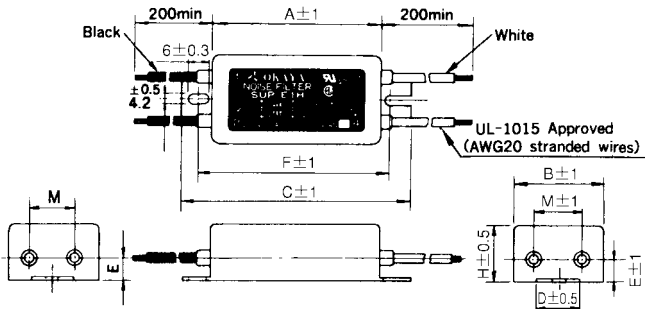
Safety Standard	Model number	Rated current (A)	Test voltage	Insulation resistance	Leakage current (max.)	Voltage drop (max.)	Temperature rise (max.)	Operating temp range(°C)
	SUP-E1H	1	Line to Line 1100Vrms 50/60Hz 60sec	Line to Line 3000MΩ min	10 μA (at 250Vrms 60Hz)	1.0Vrms	30°C	-25 to +55
	SUP-E2H	2						
	SUP-E3H	3						
	SUP-E5H SUP-E5H-0 SUP-E5H-2	5	Line to Ground 2240Vrms 50/60Hz 60sec	Line to Ground 6000MΩ min (at 500VDC)	10 μA (at 250Vrms 60Hz)	1.0Vrms	35°C	-25 to +50
	SUP-E10H SUP-E10H-0 SUP-E10H-2	10						
	SUP-E15H SUP-E15H-0 SUP-E15H-2	15						
	SUP-E20H SUP-E20H-0 SUP-E20H-2	20						

MECHANICAL DIMENSIONS

All Dimintions in mm

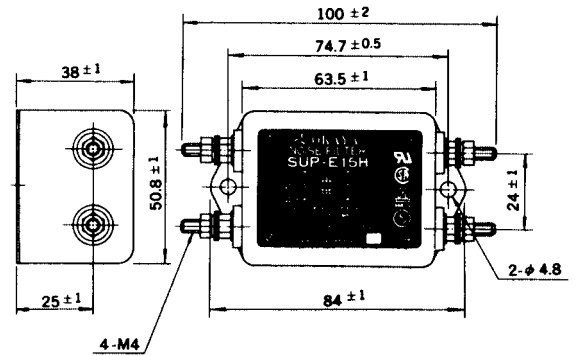
SUP-E□H

Wire Leads



SUP-EH
(1, 2, 3A)

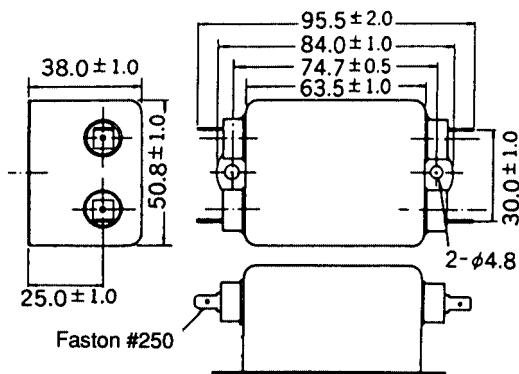
Screw Terminal



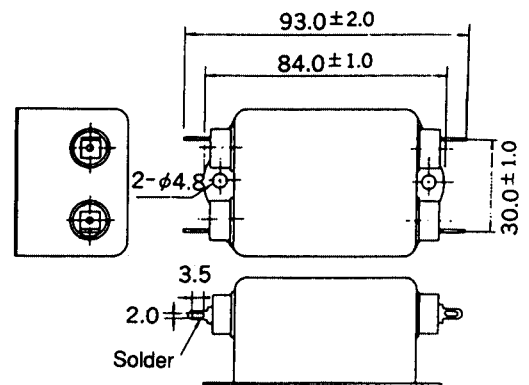
SUP-EH
(5, 10, 15, 20A)

DIMENSIONS

Model Number	A	B	C	D	E	F	H	M
SUP-E1H	60	30	80	15	7.0	70	25	20
SUP-E2H	60	30	80	15	7.0	70	25	20
SUP-E3H	60	40	80	20	7.0	70	25	25



SUP-EH-0
(5,10,15, 20A)



SUP-EH-2
(5,10,15, 20A)