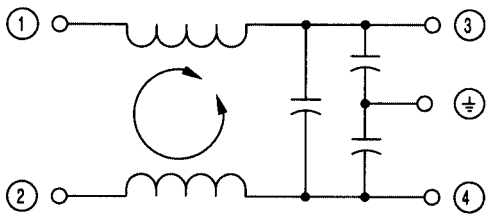


SUP-B□R-E  
SUP-C□G-E

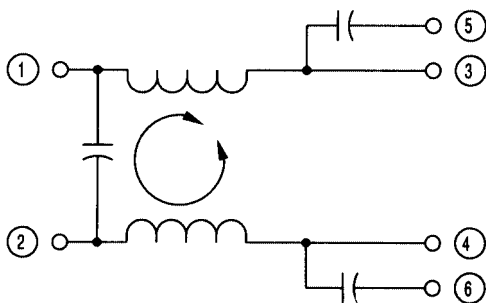
Safety Approvals	File No .
UL : UL-1283	E78644

- P.C.B. mounting with wire leads
- High Attenuation in MF and HF bands
- Case material rated UL94-VO
- Compact size

SUP-B□R-E



SUP-C□G-E



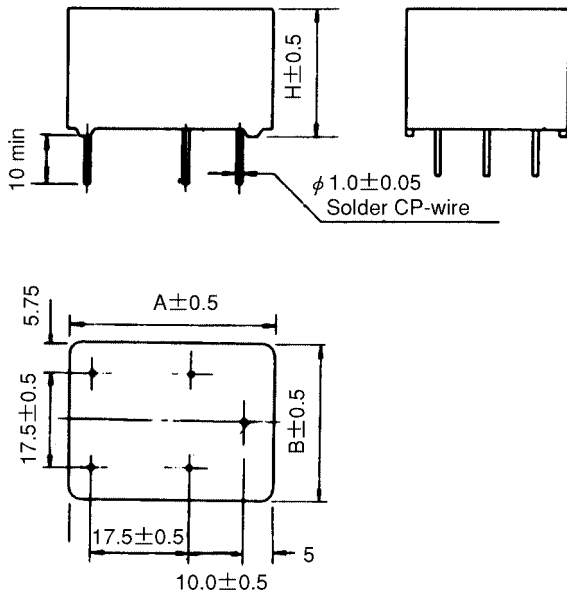
Rated voltage **250V<sub>AC</sub>**

Safety Standard	Model number	Rated current (A)	Test voltage	Insulation resistance	Leakage current (max.)	Voltage drop (max.)	Temperature rise (max.)	Operating temp range (°C)
	SUP-B2R-E	2	Line to Line 1000 Vrms 50/60Hz 60sec	Line to Line 1000 MΩ min	1.0mA (at 250Vrms 60Hz)	1.0Vrms	20 °C	-20 to +65
	SUP-B4R-E	4						
	SUP-B6R-E	6	Line to Ground 1500 Vrms 50/60Hz 60sec	Line to Ground 1000 MΩ min (at 500VDC)		0.6Vrms	30 °C	-20 to +55
	SUP-C3G-E	3						
	SUP-C6G-E	6						

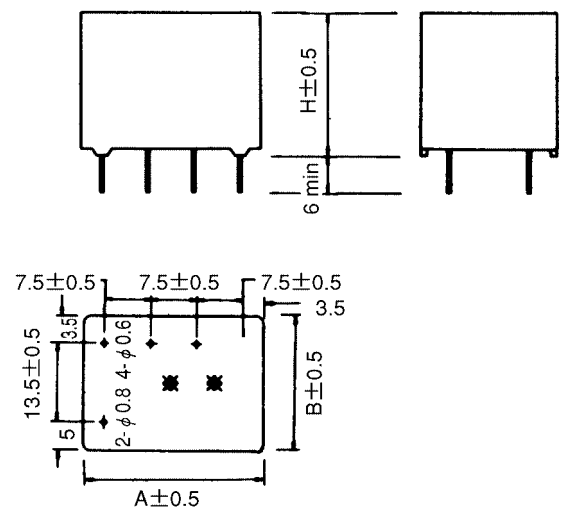
**MECHANICAL DIMENSIONS**

All Dimentions in mm

SUP-B□R-E



SUP-C□G-E



Unit : mm

**DIMENSIONS**

Model Number	Outside Dimension (mm)		
	A	B	H
SUP-B2R-E	37.0	29.0	23.0
SUP-B4R-E			
SUP-B6R-E			
SUP-C3G-E	29.0	22.0	23.5
SUP-C6G-E			