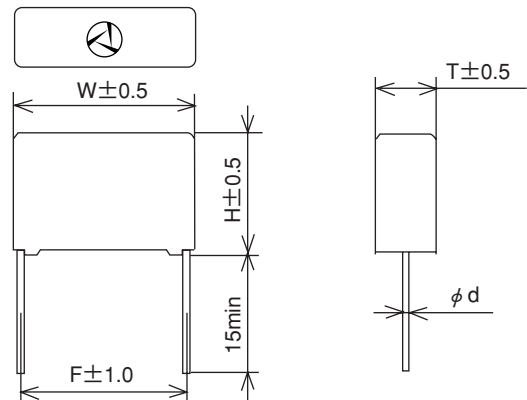
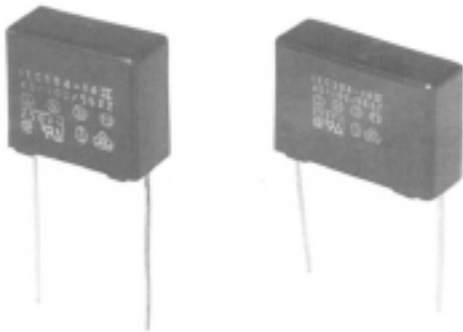


Features

- Our best price/performance series for high volume appliances.
- AC or DC applications
- Good Peak Pulse withstand capability

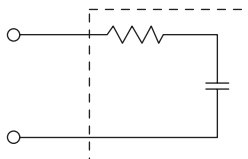
Safety Approvals		File No .
UL	: UL—1414	E47474
CSA	: CSA C22.2 No.0, 1	LR37404 LR68886 LR104926
VDE	: IEC60384—14 II , EN132400	104899 108800 108801
SEMKO	: ∕	9749233/01—02 9749240/01—02 9749238/01—02
NEMKO	: ∕	P98100822
DEMKO	: ∕	124170/DK98—01350
FIMKO	: ∕	F110590
SEV	: ∕	98.7 70282, 01

●RE Series



Unit : mm

Circuit diagram



Rated voltage **275VAC** (UL, CSA : 250V)

Safety approvals	Class symbol	Model	Capacitance μF±20%	Resistance value Ω±30%	Dimensions					Pulse condition				Peak applied voltage	Test voltage	Insulation resistance
					W	H	T	F	φ d	Peak voltage	Pulse width	Repetitive frequency	Pulse width X Frequency			
	X2	RE12001	0.01	120 (1/4W)	16.0	13.5	6.0	14.0	0.6±0.05	800V max	50msec max	120Hz max	1.5max	1200V max	Between line terminals 1000Vrms 50/60Hz 60sec Both line terminals to case 2000Vrms 50/60Hz 60sec	Between line terminals 15000MΩ min (at 100V <sub>DC</sub> ) Both line terminals to case 100000MΩ min (at 100V <sub>DC</sub> )
		RE120033	0.033	∕	∕	∕	∕	∕	1.0max							
		RE1201	0.1	∕	17.0	15.5	8.0	15.0	∕				0.45max			
		RE1202	0.2	120 (1/2W)	24.5	17.0	8.5	22.5	0.75±0.07				0.15max			

Operating temperature : -40~+100°C