

Features

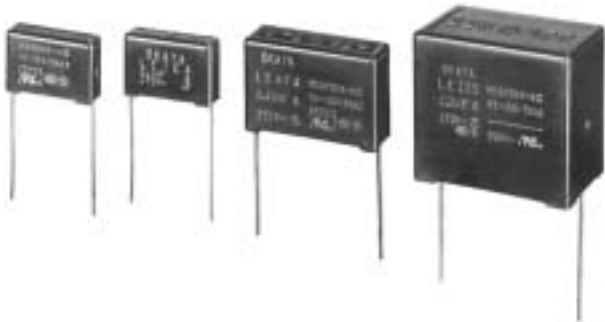
- New smaller size
- Pb Free Construction
- Best price/performance series
- Popular size configuration
- Cost effective

Safety approvals		File No.
UL	: UL-1414, UL-1283	E47474 E78644
C-UL	: C22.2 No.0, 1 C22.2 No.8	E47474 E78644
SEMKO	: IEC60384-14 II, EN132400	28277
CENELEC	ENEC	SE/0142-1

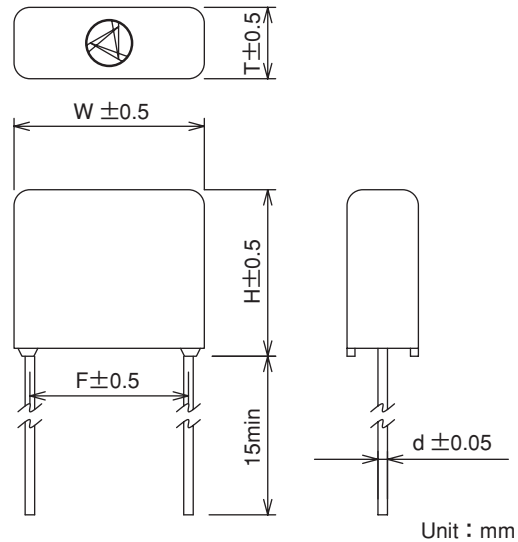
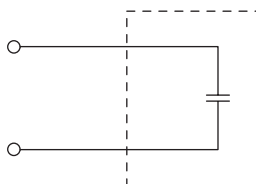
Application

- Designed mainly for suppressing noise occurring in applications, such as DC motors for power tools

● LE Series



Circuit diagram



Working voltage **275VAC** (UL, C-UL : 250V)

Safety approvals	Class symbol	Model	Capacitance $\mu F \pm 10\%$	External dimensions					Dissipation factor	Test voltage	Insulation resistance	
				W	H	T	F	d				
C _{RU} US 	X2	LE103	0.01	12.0	10.5	4.5	10.0	0.6	$C \leq 1 \mu F$ 0.003max (f=10kHz)	Between line terminals 1250Vrms 50/60Hz 60sec	Between line terminals 103~334 15000M Ω min. 474~225 5000 Ω · F min.	
		LE153	0.015	∕	∕	∕	∕	∕				
		LE223	0.022	∕	∕	∕	∕	∕				
		LE333	0.033	∕	11.5	5.5	∕	∕				
		LE473	0.047	17.0	11.0	5.0	15.0	∕				
		LE683	0.068	∕	∕	∕	∕	∕				
		LE104	0.1	∕	11.5	5.5	∕	∕	$C > 1 \mu F$ 0.002max (f=1kHz)		Both line terminals to case 2000Vrms 50/60Hz 60sec	Both line terminals to case 100,000M Ω min. (at 100Vdc)
		LE154	0.15	∕	14.0	6.5	∕	∕				
		LE224	0.22	∕	15.0	8.0	∕	∕				
		LE334	0.33	17.5	17.5	9.5	∕	0.8				
		LE474	0.47	25.5	∕	8.5	22.5	∕				
		LE684	0.68	∕	19.5	10.5	∕	∕				
		LE105	1.0	∕	22.0	12.0	∕	∕				
		LE155	1.5	30.5	24.5	15.0	27.5	∕				
LE225	2.2	∕	28.0	18.0	∕	∕						

Operating temperature : -55~+100°C