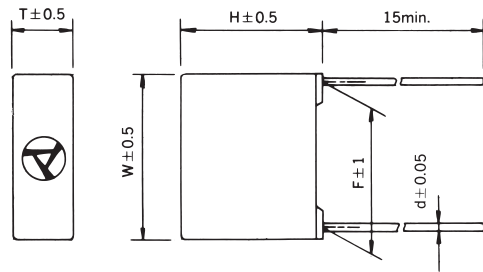


## Features

- Resin-made Case, Small in size
- Improved safety and suppressed self-heating

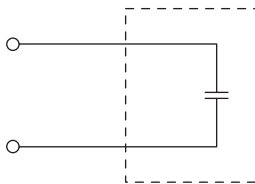
## Application

- Countermeasure against power harmonic in switching power, inverter and servo power



Unit : mm

Circuit diagram



| Capacitance<br>PART NO. | Rated voltage<br>μF | 450Vdc |      |      |      |     | 630Vdc |      |      |      |     | Dissipation factor<br>(f=1000 ±100Hz) | Test voltage<br>Rated voltage ×1.75 (2~5sec) | Insulation resistance<br>15000MΩ min.<br>5000Ω F min. (at 20°C 100Vdc) |
|-------------------------|---------------------|--------|------|------|------|-----|--------|------|------|------|-----|---------------------------------------|--|--|
|                         |                     | W      | T    | H    | F    | d   | W      | T    | H    | F    | d   |                                       |  |  |
| 104                     | 0.1                 |        |      |      |      |     | 17.0   | 8.0  | 15.0 | 15.0 | 0.8 | 0.01max                               | Rated voltage ×1.75 (2~5sec)                 | 15000MΩ min.<br>5000Ω F min. (at 20°C 100Vdc)                          |
| 154                     | 0.15                |        |      |      |      |     | 25.0   | 6.5  | 16.0 | 22.5 | ∕   |                                       |  |  |
| 224                     | 0.22                | 17.0   | 8.0  | 15.0 | 15.0 | 0.8 | ∕      | 8.0  | 17.5 | ∕    | ∕   |                                       |  |  |
| 334                     | 0.33                | 25.0   | 6.5  | 16.0 | 22.5 | ∕   | ∕      | 10.0 | 19.5 | ∕    | ∕   |                                       |  |  |
| 474                     | 0.47                | ∕      | 8.0  | 17.5 | ∕    | ∕   | 30.0   | 11.0 | 22.0 | 27.5 | ∕   |                                       |  |  |
| 684                     | 0.68                | ∕      | 10.0 | 19.5 | ∕    | ∕   | ∕      | 13.5 | 24.5 | ∕    | ∕   |                                       |  |  |
| 105                     | 1.0                 | 30.0   | 11.0 | 22.0 | 27.5 | ∕   | 30.5   | 16.0 | 28.0 | ∕    | 1.0 |                                       |  |  |
| 155                     | 1.5                 | ∕      | 13.5 | 24.5 | ∕    | ∕   | 41.0   | 15.5 | ∕    | 37.5 | ∕   |                                       |  |  |
| 225                     | 2.2                 | 30.5   | 16.0 | 28.0 | ∕    | ∕   | ∕      | 17.5 | 32.5 | ∕    | ∕   |                                       |  |  |

Operating temperature -40°C ~ +105°C

## Model coding system

