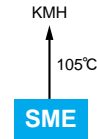




SME Series

●Endurance with ripple current : 85°C 2000 hours



◆SPECIFICATIONS

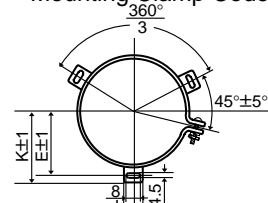
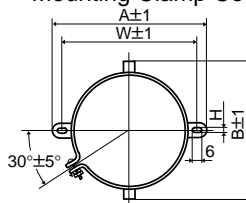
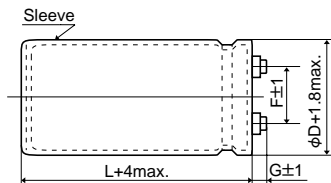
Items	Characteristics
Category	
Temperature Range	-40 to +85°C (10 to 100V _{dc}) -25 to +85°C (160 to 250V _{dc})
Rated Voltage Range	10 to 250V _{dc}
Capacitance Tolerance	±20% (M) (at 20°C, 120Hz)
Leakage Current	I=0.02CV or 5mA, whichever is smaller. Where, I : Max. leakage current (μA), C : Nominal capacitance (μF), V : Rated voltage (V) (at 20°C after 5 minutes)
Dissipation Factor (tanδ)	Shall not exceed the values shown in the STANDARD RATINGS (at 20°C, 120Hz)
Low Temperature Characteristics	Capacitance change $C(-25^{\circ}\text{C})/C(+20^{\circ}\text{C}) \geq 0.7$ (at 120Hz)
Insulation Resistance	When measured between the terminals shorted each other and the mounting clamp on the insulating sleeve covering the case by using an insulation resistance meter of 500V _{dc} , the insulation resistance shall not be less than 100MΩ.
Insulation Withstanding Voltage	When a voltage of 2000V _{ac} is applied for 1 minute between the terminals shorted each other and the mounting clamp on the insulating sleeve covering the case, there shall not be electrical damage.
Endurance	The following specifications shall be satisfied when the capacitors are restored to 20°C after subjected to DC voltage with the rated ripple current is applied for 2000 hours at 85°C.
	Capacitance change $\leq \pm 20\%$ of the initial value
	D.F. (tanδ) $\leq 200\%$ of the initial specified value
	Leakage current \leq The initial specified value
Shelf Life	The following specifications shall be satisfied when the capacitors are restored to 20°C after exposing them for 500 hours at 85°C without voltage applied.
	Capacitance change $\leq \pm 20\%$ of the initial value
	D.F. (tanδ) $\leq 150\%$ of the initial specified value
	Leakage current \leq The initial specified value

◆DIMENSIONS (Screw-Mount) [mm]

●Terminal Code : LG

●Mounting Clamp Code : B

●Mounting Clamp Code : C



φD	A	B	W	H	F
35	58	44	48	3.5	12.7
50	78	64	68	4.5	22.4
63.5	90	76	80	4.5	28.0
76	104.5	90	93.5	4.5	31.5

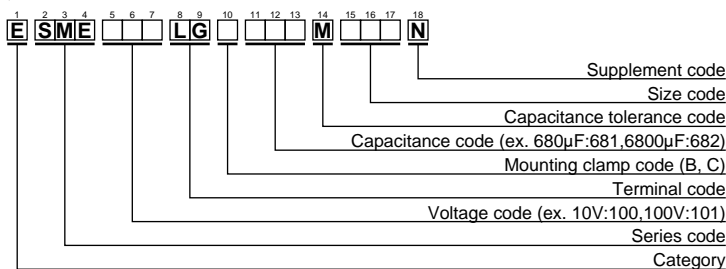
φD	E	K	J	F
50	32.5	37.0	14.0	22.4
63.5	38.1	43.5	14.0	28.0
76	44.5	50.0	14.0	31.5
89	50.8	56.5	16.0	31.5

<Screw specifications>
 Plus hexagon-headed screw:
 M5X0.8X10
 Maximum screw tightening torque:
 3.23Nm

φ35 to φ63.5 : G=6
 φ76 & φ89 : G=5

* The screw and the mounting clamp are separately supplied and not attached to the product.

◆PART NUMBERING SYSTEM



Please refer to "A guide to global code (screw-mount terminal type)"

◆RATED RIPPLE CURRENT MULTIPLIERS

●Frequency Multipliers

Rated voltage (V _{dc})	Case diameter (mm)	Frequency (Hz)					
		50	120	300	1k	10k	50k
10 to 50	φ35 to φ89	0.95	1.00	1.03	1.05	1.09	1.12
	φ35	0.90	1.00	1.06	1.10	1.18	1.22
63 & 80	φ50 to φ89	0.95	1.00	1.03	1.05	1.09	1.12
	φ35	0.82	1.00	1.12	1.22	1.30	1.33
100	φ50	0.90	1.00	1.06	1.10	1.18	1.22
	φ63.5 to φ89	0.95	1.00	1.03	1.05	1.09	1.12
160 to 250	φ35	0.80	1.00	1.19	1.34	1.46	1.52
	φ50 & φ63.5	0.81	1.00	1.14	1.26	1.36	1.41
	φ76 & φ89	0.82	1.00	1.12	1.22	1.30	1.33



SME Series

◆STANDARD RATINGS

WV (Vdc)	Cap (μF)	Case size φDXL(mm)	tanδ	Rated ripple current (Arms/85°C,120Hz)	Part No.	WV (Vdc)	Cap (μF)	Case size φDXL(mm)	tanδ	Rated ripple current (Arms/85°C,120Hz)	Part No.	
10	39000	35 × 50	0.60	4.7	ESME100LGB393MA50N	63	47000	63.5 × 100	0.40	10.2	ESME630LGC473MDA0N	
	82000	35 × 80	0.60	7.4	ESME100LGB823MA80N		68000	63.5 × 120	0.40	13.3	ESME630LGC683MDC0N	
	100000	35 × 100	0.70	8.0	ESME100LGB104MAA0N		100000	76 × 120	0.45	17.1	ESME630LGC104MEC0N	
	120000	35 × 120	0.70	9.4	ESME100LGB124MAC0N		120000	76 × 140	0.50	19.0	ESME630LGC124MEE0N	
	150000	50 × 80	0.90	9.8	ESME100LGC154MC80N		150000	89 × 140	0.55	22.0	ESME630LGC154MFE0N	
	220000	50 × 100	1.00	12.1	ESME100LGC224MCA0N		80	3300	35 × 50	0.15	2.5	ESME800LGB332MA50N
	270000	50 × 120	1.20	13.6	ESME100LGC274MCC0N			6800	35 × 80	0.20	3.7	ESME800LGB682MA80N
	390000	63.5 × 100	1.50	15.3	ESME100LGC394MDA0N			10000	35 × 100	0.20	4.9	ESME800LGB103MAA0N
	470000	63.5 × 120	2.00	16.0	ESME100LGC474MDC0N			12000	35 × 120	0.20	5.4	ESME800LGB123MAC0N
	560000	76 × 100	2.50	17.3	ESME100LGC564MEA0N			15000	50 × 80	0.25	6.0	ESME800LGC153MC80N
680000	76 × 120	3.00	18.7	ESME100LGC684MEC0N	22000	50 × 100		0.30	7.1	ESME800LGC223MCA0N		
16	27000	35 × 50	0.45	4.2	ESME160LGB273MA50N	27000		50 × 120	0.30	8.6	ESME800LGB103MAA0N	
	56000	35 × 80	0.60	6.5	ESME160LGB563MA80N	33000		63.5 × 100	0.35	9.3	ESME800LGC333MDA0N	
	82000	35 × 100	0.70	8.0	ESME160LGB823MAA0N	47000		63.5 × 120	0.35	12.0	ESME800LGC473MDC0N	
	100000	35 × 120	0.70	9.6	ESME160LGB104MAC0N	68000		76 × 120	0.35	15.4	ESME800LGC683MEC0N	
	120000	50 × 80	0.80	9.6	ESME160LGC124MC80N	82000	76 × 140	0.35	18.1	ESME800LGC823MEE0N		
	150000	50 × 100	0.90	11.2	ESME160LGC154MCA0N	100000	89 × 140	0.40	21.0	ESME800LGC104MFE0N		
	220000	50 × 120	1.00	14.2	ESME160LGC224MCC0N	100	2200	35 × 50	0.10	2.5	ESME101LGB222MA50N	
	270000	63.5 × 100	1.20	15.3	ESME160LGC274MDA0N		4700	35 × 80	0.15	3.4	ESME101LGB472MA80N	
	330000	63.5 × 120	1.30	17.1	ESME160LGC334MDC0N		6800	35 × 100	0.15	4.2	ESME101LGB682MAA0N	
	390000	76 × 100	1.60	18.0	ESME160LGC394MEA0N		8200	35 × 120	0.15	5.0	ESME101LGB822MAC0N	
470000	76 × 120	1.80	19.3	ESME160LGC474MEC0N	10000		50 × 80	0.20	5.2	ESME101LGC103MC80N		
560000	76 × 140	2.00	20.7	ESME160LGC564MEE0N	18000		50 × 120	0.20	8.1	ESME101LGC183MCC0N		
25	18000	35 × 50	0.35	4.0	ESME250LGB183MA50N		22000	63.5 × 100	0.25	8.6	ESME101LGC223MDA0N	
	39000	35 × 80	0.40	6.2	ESME250LGB393MA80N		27000	63.5 × 120	0.25	10.3	ESME101LGC273MDC0N	
	47000	35 × 100	0.40	7.4	ESME250LGB473MAA0N		33000	76 × 100	0.25	11.1	ESME101LGC333MEA0N	
	56000	35 × 120	0.45	8.3	ESME250LGB563MAC0N		39000	76 × 120	0.25	12.4	ESME101LGC393MEC0N	
	82000	50 × 80	0.50	9.7	ESME250LGC823MC80N	47000	76 × 140	0.25	14.3	ESME101LGC473MEE0N		
	100000	50 × 100	0.60	10.8	ESME250LGC104MCA0N	68000	89 × 140	0.30	18.0	ESME101LGC683MFE0N		
	120000	50 × 120	0.60	12.8	ESME250LGC124MCC0N	160	1200	35 × 50	0.15	2.0	ESME161LGB122MA50N	
	180000	63.5 × 100	0.75	14.7	ESME250LGC184MDA0N		2200	35 × 80	0.15	3.4	ESME161LGB222MA80N	
	220000	63.5 × 120	0.80	16.8	ESME250LGC224MDC0N		2700	35 × 100	0.15	3.7	ESME161LGB272MAA0N	
	270000	76 × 100	0.90	18.3	ESME250LGC274MEA0N		3300	35 × 120	0.15	4.5	ESME161LGB332MAC0N	
330000	76 × 120	1.00	20.7	ESME250LGC334MEC0N	4700		50 × 80	0.20	5.6	ESME161LGC472MC80N		
390000	76 × 140	1.20	22.1	ESME250LGC394MEE0N	6800		50 × 100	0.20	7.5	ESME161LGC682MCA0N		
560000	89 × 140	1.50	25.8	ESME250LGC564MFE0N	8200		50 × 120	0.20	8.1	ESME161LGC823MCC0N		
35	15000	35 × 50	0.30	3.9	ESME350LGB153MA50N		10000	63.5 × 100	0.20	9.8	ESME161LGC103MDA0N	
	33000	35 × 80	0.40	6.0	ESME350LGB333MA80N		12000	63.5 × 120	0.20	10.8	ESME161LGC123MDC0N	
	39000	35 × 100	0.40	7.0	ESME350LGB393MAA0N		15000	76 × 100	0.20	12.7	ESME161LGC153MEA0N	
	47000	35 × 120	0.45	8.0	ESME350LGB473MAC0N	18000	76 × 120	0.20	14.0	ESME161LGC183MEC0N		
	68000	50 × 80	0.50	9.0	ESME350LGC683MC80N	22000	76 × 140	0.20	16.6	ESME161LGC223MEE0N		
	82000	50 × 100	0.55	10.3	ESME350LGC823MCA0N	33000	89 × 140	0.25	18.9	ESME161LGC333MFE0N		
	120000	50 × 120	0.60	12.8	ESME350LGC124MCC0N	200	820	35 × 50	0.15	1.6	ESME201LGB821MA50N	
	150000	63.5 × 100	0.70	14.0	ESME350LGC154MDA0N		1800	35 × 80	0.15	2.8	ESME201LGB182MA80N	
	180000	63.5 × 120	0.70	16.6	ESME350LGC184MDC0N		2200	35 × 100	0.15	3.6	ESME201LGB222MAA0N	
	220000	76 × 100	0.75	17.3	ESME350LGC224MEA0N		2700	35 × 120	0.15	4.0	ESME201LGB272MAC0N	
270000	76 × 120	0.80	19.8	ESME350LGC274MEC0N	3300		50 × 80	0.15	4.5	ESME201LGC332MC80N		
330000	76 × 140	0.90	22.5	ESME350LGC334MEE0N	4700		50 × 100	0.15	7.1	ESME201LGC472MCA0N		
470000	89 × 140	1.00	28.3	ESME350LGC474MFE0N	5600		50 × 120	0.15	8.2	ESME201LGC562MCC0N		
50	10000	35 × 50	0.25	4.1	ESME500LGB103MA50N		8200	63.5 × 100	0.20	10.0	ESME201LGC822MDA0N	
	18000	35 × 80	0.25	5.2	ESME500LGB183MA80N		10000	63.5 × 120	0.20	11.0	ESME201LGC103MDC0N	
	22000	35 × 100	0.30	5.9	ESME500LGB223MAA0N		12000	76 × 100	0.20	11.5	ESME201LGC123MEA0N	
	27000	35 × 120	0.35	6.6	ESME500LGB273MAC0N	15000	76 × 120	0.20	12.8	ESME201LGC153MEC0N		
	39000	50 × 80	0.40	7.4	ESME500LGC393MC80N	18000	76 × 140	0.20	15.0	ESME201LGC183MEE0N		
	56000	50 × 100	0.40	9.8	ESME500LGC563MCA0N	22000	89 × 140	0.25	15.6	ESME201LGC223MFE0N		
	68000	50 × 120	0.45	11.1	ESME500LGC683MCC0N	250	560	35 × 50	0.15	1.3	ESME251LGB561MA50N	
	82000	63.5 × 100	0.50	12.2	ESME500LGC823MDA0N		1200	35 × 80	0.15	2.3	ESME251LGB122MA80N	
	120000	63.5 × 120	0.50	16.0	ESME500LGC124MDC0N		1500	35 × 100	0.15	3.0	ESME251LGB152MAA0N	
	150000	76 × 120	0.60	18.1	ESME500LGC154MEC0N		1800	35 × 120	0.15	3.3	ESME251LGB182MAC0N	
180000	76 × 140	0.70	19.5	ESME500LGC184MEE0N	2200		50 × 80	0.15	3.7	ESME251LGC222MC80N		
270000	89 × 140	0.80	24.6	ESME500LGC274MFE0N	3300		50 × 100	0.15	5.1	ESME251LGC332MCA0N		
63	5600	35 × 50	0.20	3.0	ESME630LGB562MA50N		3900	50 × 120	0.15	5.9	ESME251LGC392MCC0N	
	10000	35 × 80	0.25	4.0	ESME630LGB103MA80N		4700	63.5 × 100	0.20	6.9	ESME251LGC472MDA0N	
	15000	35 × 100	0.25	5.3	ESME630LGB153MAA0N		6800	63.5 × 120	0.20	8.7	ESME251LGC682MDC0N	
	18000	35 × 120	0.25	6.2	ESME630LGB183MAC0N		10000	76 × 120	0.20	11.1	ESME251LGC103MEC0N	
	22000	50 × 80	0.30	6.5	ESME630LGC223MC80N	12000	76 × 140	0.20	13.0	ESME251LGC123MEE0N		
	33000	50 × 100	0.35	8.1	ESME630LGC333MCA0N	15000	89 × 140	0.20	14.9	ESME251LGC153MFE0N		
	39000	50 × 120	0.35	9.6	ESME630LGC393MCC0N							