

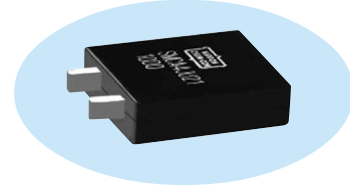
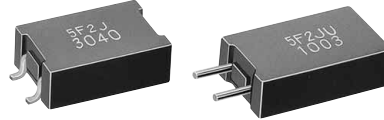
SM Series

◆ MAJOR USES

- Choke coils for DC-DC converter
- Output choke coils for Switching Mode Power Supply

◆ FEATURES

- Minimum device thickness of 6.8 mm with high D.C. rated current
- Remarkably small of D.C. resistance in this type of device
- Use of Fe-base amorphous for excellent operation stability at high temperature
- Preparation of both SMD and SIP type

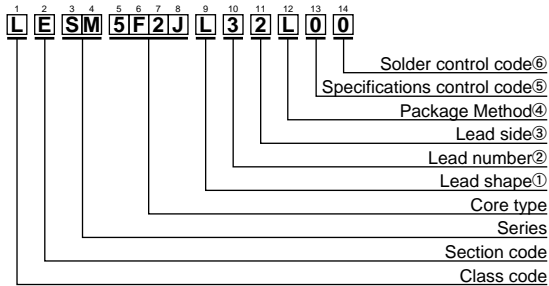


◆ GENERAL SPECIFICATION

Items	Rated value
Operating Temperature Range *1	-25 to 130°C
Storage Temperature Range	-25 to 130°C
Operating Humidity Range	20 to 95%RH
Storage Humidity Range	20 to 80%RH
Operating Frequency Range *2	20kHz to 500kHz
Increase in Temperature *3	45 deg. or less
Insulating Type	Type B (130°C)
Incombustibility *4	UL94V-0

*1 Temperature on the coil surface including the increase in self-temperature in installation.
 *2 When infra-acoustic frequency component is impressed, a beat sound some times occur.
 *3 Increase in the temperature on the coil surface during the flow of the rated D.C. current.
 *4 Housing case material.

◆ PART NUMBER DESIGNATIONS



Code	Lead shape
S	SMD type (Vertical)
L	SMD type (Horizontal)
U	SIP type (Vertical)
G	SIP type (Horizontal)

Code	Lead number
2	2
3	3
4	4

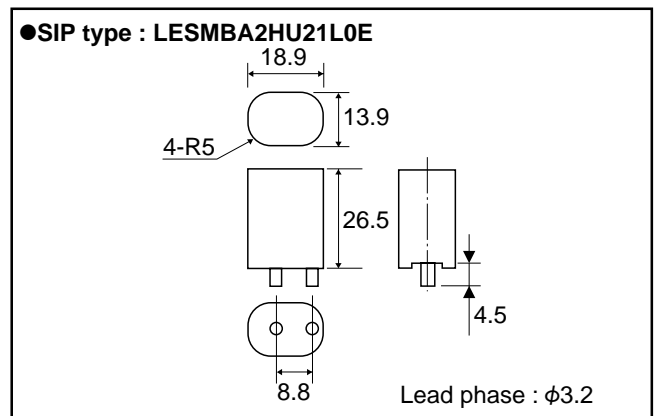
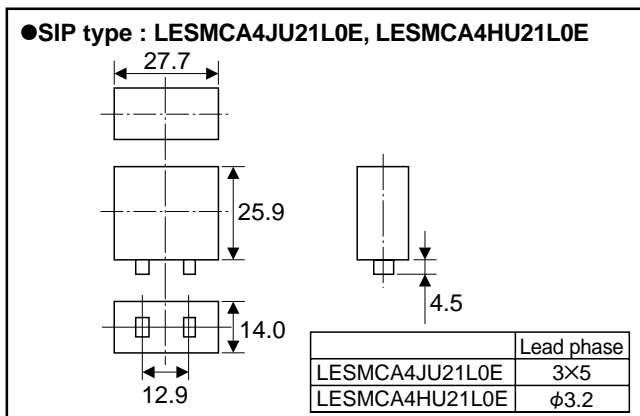
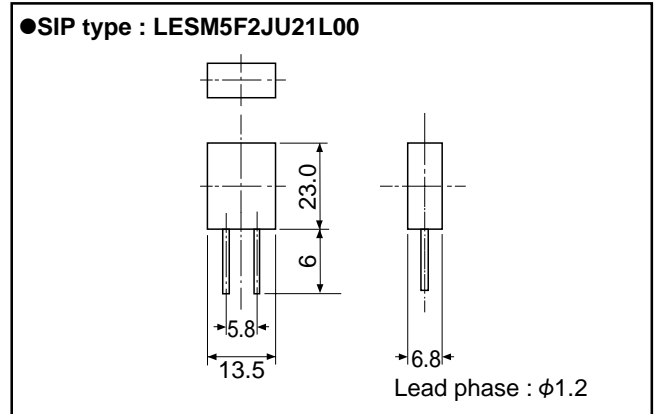
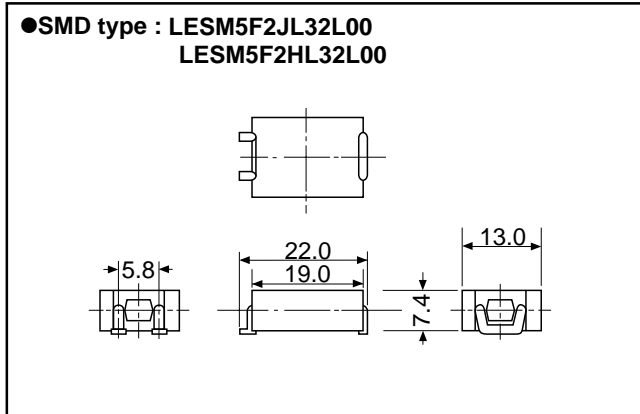
Code	Lead side
1	One Side
2	Two Side

Code	Contents
T	Taping
L	Standard tray
N	Others

Code	Specifications
0	Standard
1	Custom

Code	Specifications
0	Standard solder
E	Pb free

◆ STANDARD DIMENSION DIAGRAM (mm)

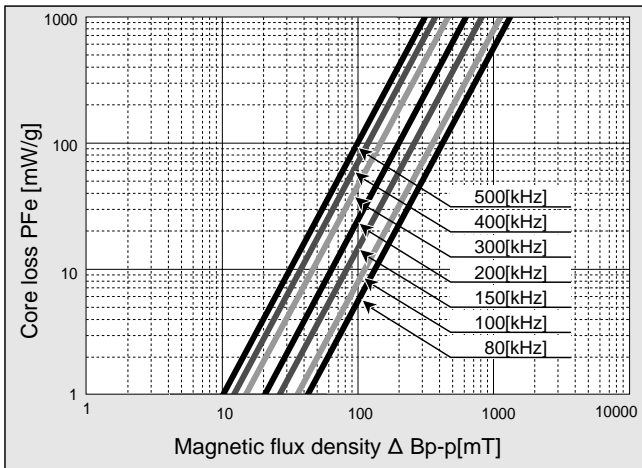


◆ COIL STANDARD SPECIFICATIONS

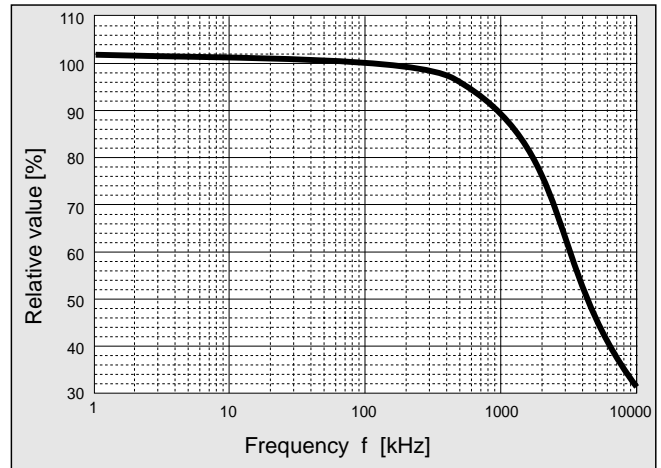
Coil Part No. (Old Coil Part No.)	Rated Current A	Inductance ^{*1}		D.C.R. mΩ (max)	Mounting Direction	Outside Dimensions		
		0[A] μH	Rating μH			ℓ mm	w mm	h mm
LESM5F2JU21L00 (SM5F2JU21)	10	4.8	2.6	1.0	Vertical	13.5	6.8	23.0
LESM5F2JL32L00 (SM5F2JL32)	10	4.8	2.6	1.0	Horizontal	22.0	13.0	7.4
LESM5F2HL32L00 (SM5F2HL32)	20	1.2	0.9	1.0	Horizontal	22.0	13.0	7.4
● LESMCA4HU21L0E (SMCA4HU21ZPBF)	30	3.5	2.2	0.3	Vertical	27.7	14.0	25.9
● LESMBA2HU21L0E (SMBA2HU21ZPBF)	35	1.2	0.9	0.3	Vertical	18.9	13.9	26.5
● LESMCA4JU21L0E (SMCA4JU21PBF)	70	1.6	0.9	0.2	Vertical	27.7	14.0	25.9

*Inductance measurement condition : 100kHz (SMCA4HU21Z, SMBA2HU21Z : 200kHz)
The inductance at current 0[A] indicates the reference value.
The item preceded by symbol ● Pb free only.

◆ CORE LOSS CHARACTERISTICS

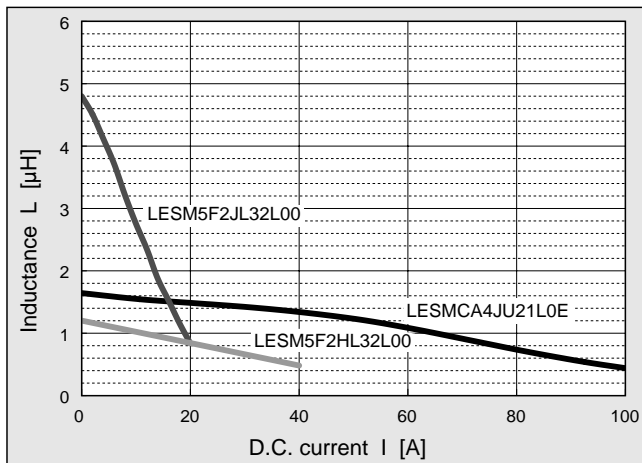


◆ FREQUENCY - INDUCTANCE CHARACTERISTICS



◆ D.C. BIAS CHARACTERISTICS (1)

● Frequency : 100[kHz]



◆ D.C. BIAS CHARACTERISTICS (2)

● Frequency : 200[kHz]

