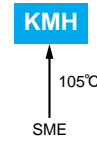




# LARGE CAPACITANCE ALUMINUM ELECTROLYTIC CAPACITORS Standard screw terminals, 105°C

## KMH Series

- Downsized from KME series
- Endurance with ripple current : 105°C 2000 hours



### ◆ SPECIFICATIONS

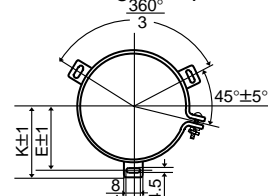
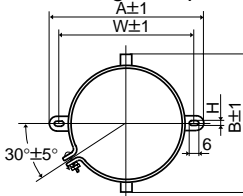
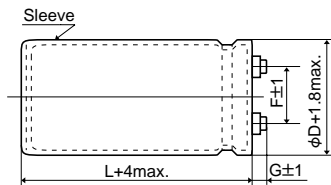
Items	Characteristics						
<b>Category</b> <b>Temperature Range</b>	-40 to +105°C (10 to 100V <sub>dc</sub> )    -25 to +105°C (160 to 400V <sub>dc</sub> )						
<b>Rated Voltage Range</b>	10 to 400V <sub>dc</sub>						
<b>Capacitance Tolerance</b>	±20% (M) <span style="float:right">(at 20°C, 120Hz)</span>						
<b>Leakage Current</b>	I=0.02CV or 5mA, whichever is smaller. Where, I : Max. leakage current (μA), C : Nominal capacitance (μF), V : Rated voltage (V) <span style="float:right">(at 20°C after 5 minutes)</span>						
<b>Dissipation Factor (tanδ)</b>	Shall not exceed the values shown in the STANDARD RATINGS <span style="float:right">(at 20°C, 120Hz)</span>						
<b>Low Temperature Characteristics</b>	Capacitance change 10 to 100V <sub>dc</sub> : C(-40°C)/C(+20°C)≥0.6 160 to 400V <sub>dc</sub> : C(-25°C)/C(+20°C)≥0.7 <span style="float:right">(at 120Hz)</span>						
<b>Insulation Resistance</b>	When measured between the terminals shorted each other and the mounting clamp on the insulating sleeve covering the case by using an insulation resistance meter of 500V <sub>dc</sub> , the insulation resistance shall not be less than 100MΩ.						
<b>Insulation Withstanding Voltage</b>	When a voltage of 2000Vac is applied for 1 minute between the terminals shorted each other and the mounting clamp on the insulating sleeve covering the case, there shall not be electrical damage.						
<b>Endurance</b>	The following specifications shall be satisfied when the capacitors are restored to 20°C after subjected to DC voltage with the rated ripple current is applied for 2000 hours at 105°C. <table border="1" style="width:100%; border-collapse: collapse;"> <tr> <td>Capacitance change</td> <td>≤±20% of the initial value</td> </tr> <tr> <td>D.F. (tanδ)</td> <td>≤200% of the initial specified value</td> </tr> <tr> <td>Leakage current</td> <td>≤The initial specified value</td> </tr> </table>	Capacitance change	≤±20% of the initial value	D.F. (tanδ)	≤200% of the initial specified value	Leakage current	≤The initial specified value
Capacitance change	≤±20% of the initial value						
D.F. (tanδ)	≤200% of the initial specified value						
Leakage current	≤The initial specified value						
<b>Shelf Life</b>	The following specifications shall be satisfied when the capacitors are restored to 20°C after exposing them for 500 hours at 105°C without voltage applied. <table border="1" style="width:100%; border-collapse: collapse;"> <tr> <td>Capacitance change</td> <td>≤±20% of the initial value</td> </tr> <tr> <td>D.F. (tanδ)</td> <td>≤200% of the initial specified value</td> </tr> <tr> <td>Leakage current</td> <td>≤The initial specified value</td> </tr> </table>	Capacitance change	≤±20% of the initial value	D.F. (tanδ)	≤200% of the initial specified value	Leakage current	≤The initial specified value
Capacitance change	≤±20% of the initial value						
D.F. (tanδ)	≤200% of the initial specified value						
Leakage current	≤The initial specified value						

### ◆ DIMENSIONS (Screw-Mount) [mm]

● Terminal Code : LG

● Mounting Clamp Code : B

● Mounting Clamp Code : C



φD	A	B	W	H	F
35	58	44	48	3.5	12.7
50	78	64	68	4.5	22.4
63.5	90	76	80	4.5	28.0
76	104.5	90	93.5	4.5	31.5

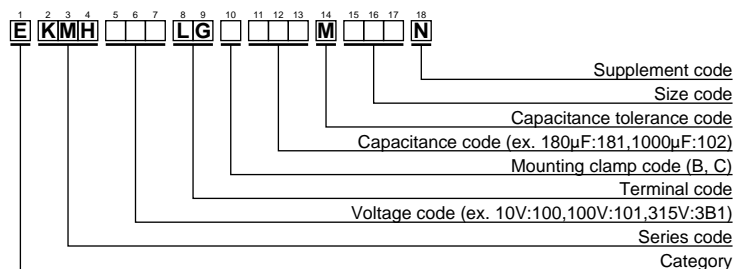
φD	E	K	J	F
50	32.5	37.0	14.0	22.4
63.5	38.1	43.5	14.0	28.0
76	44.5	50.0	14.0	31.5
89	50.8	56.5	16.0	31.5

<Screw specifications>  
 Plus hexagon-headed screw:  
 M5X0.8X10  
 Maximum screw tightening torque:  
 3.23Nm

φ35 to φ63.5 : G=6  
 φ76 & φ89 : G=5

\* The screw and the mounting clamp are separately supplied and not attached to the product.

### ◆ PART NUMBERING SYSTEM



Please refer to "A guide to global code (screw-mount terminal type)"



◆ **STANDARD RATINGS**

WV (Vdc)	Cap (μF)	Case size φD×L(mm)	tanδ	Rated ripple current (Arms/105°C,120Hz)	Part No.	WV (Vdc)	Cap (μF)	Case size φD×L(mm)	tanδ	Rated ripple current (Arms/105°C,120Hz)	Part No.	
10	27000	35×50	0.45	4.9	EKMH100LGB273MA50N	35	56000	50×100	0.40	11.4	EKMH350LGC563MA0N	
	33000	35×50	0.50	5.1	EKMH100LGB333MA50N		68000	50×120	0.40	13.6	EKMH350LGC683MCC0N	
	39000	35×60	0.50	5.9	EKMH100LGB393MA60N		82000	63.5×100	0.45	14.8	EKMH350LGC823MDA0N	
	47000	35×80	0.50	7.1	EKMH100LGB473MA80N		100000	63.5×120	0.45	17.6	EKMH350LGC104MDC0N	
	56000	35×80	0.60	7.1	EKMH100LGB563MA80N		120000	63.5×120	0.55	17.6	EKMH350LGC124MDC0N	
	68000	35×100	0.60	8.5	EKMH100LGB683MAA0N		150000	76×120	0.65	19.8	EKMH350LGC154MEC0N	
	82000	35×100	0.65	8.9	EKMH100LGB823MAA0N		180000	76×120	0.80	19.8	EKMH350LGC184MEC0N	
	100000	35×120	0.65	10.7	EKMH100LGB104MAC0N		220000	76×140	0.80	23.4	EKMH350LGC224MEE0N	
	120000	50×80	0.75	11.0	EKMH100LGC124MC80N		270000	89×140	1.00	25.5	EKMH350LGC274MFE0N	
	150000	50×100	0.80	13.2	EKMH100LGC154MCA0N		50	3900	35×50	0.20	2.8	EKMH500LGB392MA50N
	180000	50×120	0.80	15.7	EKMH100LGC184MCC0N			4700	35×50	0.20	3.1	EKMH500LGB472MA50N
	220000	50×120	0.85	16.8	EKMH100LGC224MCC0N			5600	35×50	0.20	3.3	EKMH500LGB562MA50N
	270000	63.5×120	1.00	19.6	EKMH100LGC274MDC0N			6800	35×50	0.25	3.3	EKMH500LGB682MA50N
	330000	63.5×120	1.20	19.7	EKMH100LGC334MDC0N			8200	35×60	0.25	3.8	EKMH500LGB822MA60N
	390000	76×120	1.50	21.3	EKMH100LGC394MEC0N			10000	35×80	0.25	4.6	EKMH500LGB103MA80N
	470000	76×120	1.80	21.4	EKMH100LGC474MEC0N			12000	35×80	0.25	5.1	EKMH500LGB123MA80N
	560000	76×140	2.00	23.6	EKMH100LGC564MEE0N			15000	35×80	0.25	5.7	EKMH500LGB153MA80N
	680000	89×140	2.40	26.0	EKMH100LGC684MFE0N			18000	35×100	0.25	6.7	EKMH500LGB183MAA0N
16	18000	35×50	0.40	4.2	EKMH160LGB183MA50N	22000		35×120	0.25	8.1	EKMH500LGB223MAC0N	
	22000	35×50	0.40	4.7	EKMH160LGB223MA50N	27000		50×80	0.25	9.1	EKMH500LGC273MC80N	
	27000	35×60	0.40	5.5	EKMH160LGB273MA60N	33000		50×100	0.25	11.1	EKMH500LGC333MCA0N	
	33000	35×60	0.45	5.7	EKMH160LGB333MA60N	39000		50×120	0.25	13.1	EKMH500LGC393MCC0N	
	39000	35×80	0.45	6.8	EKMH160LGB393MA80N	47000		50×120	0.30	13.9	EKMH500LGC473MCC0N	
	47000	35×80	0.50	7.1	EKMH160LGB473MA80N	56000		63.5×100	0.35	13.9	EKMH500LGC563MDA0N	
	56000	35×100	0.50	8.4	EKMH160LGB563MAA0N	68000		63.5×120	0.35	16.6	EKMH500LGC683MDC0N	
	68000	35×100	0.55	8.8	EKMH160LGB683MAA0N	82000		76×120	0.40	18.9	EKMH500LGC823MEC0N	
	82000	50×80	0.55	10.7	EKMH160LGC823MC80N	100000		76×120	0.45	19.5	EKMH500LGC104MEC0N	
	100000	50×80	0.65	10.8	EKMH160LGC104MC80N	120000	76×120	0.55	19.5	EKMH500LGC124MEC0N		
	120000	50×100	0.65	13.1	EKMH160LGC124MCA0N	150000	89×140	0.60	23.9	EKMH500LGC154MFE0N		
	150000	50×120	0.70	15.3	EKMH160LGC154MCC0N	180000	89×140	0.75	23.9	EKMH500LGC184MFE0N		
	180000	50×120	0.80	15.7	EKMH160LGC184MCC0N	63	2700	35×50	0.20	2.3	EKMH630LGB272MA50N	
	220000	63.5×120	0.85	19.2	EKMH160LGC224MDC0N		3300	35×50	0.20	2.5	EKMH630LGB332MA50N	
	270000	63.5×120	1.00	19.6	EKMH160LGC274MDC0N		3900	35×50	0.20	2.8	EKMH630LGB392MA50N	
	330000	76×120	1.30	21.1	EKMH160LGC334MEC0N		4700	35×50	0.20	3.1	EKMH630LGB472MA50N	
	390000	76×120	1.50	21.3	EKMH160LGC394MEC0N		5600	35×60	0.20	3.5	EKMH630LGB562MA60N	
	470000	76×140	1.60	24.2	EKMH160LGC474MEE0N		6800	35×60	0.20	3.9	EKMH630LGB682MA60N	
560000	89×140	2.00	28.1	EKMH160LGC564MFE0N	8200		35×80	0.20	4.7	EKMH630LGB822MA80N		
680000	89×140	2.40	28.5	EKMH160LGC684MFE0N	10000		35×80	0.25	4.7	EKMH630LGB103MA80N		
25	12000	35×50	0.35	3.7	EKMH250LGB123MA50N		12000	35×100	0.25	5.5	EKMH630LGB123MAA0N	
	15000	35×50	0.35	4.1	EKMH250LGB153MA50N		15000	35×120	0.25	6.6	EKMH630LGB153MAC0N	
	18000	35×60	0.35	4.8	EKMH250LGB183MA60N		18000	50×80	0.25	7.4	EKMH630LGC183MC80N	
	22000	35×60	0.35	5.3	EKMH250LGB223MA60N		22000	50×100	0.25	9.0	EKMH630LGC223MCA0N	
	27000	35×80	0.35	6.4	EKMH250LGB273MA80N		27000	50×120	0.25	10.9	EKMH630LGC273MCC0N	
	33000	35×80	0.40	6.7	EKMH250LGB333MA80N		33000	50×120	0.25	12.0	EKMH630LGC333MCC0N	
	39000	35×100	0.40	7.8	EKMH250LGB393MAA0N		39000	63.5×100	0.30	12.5	EKMH630LGC393MDA0N	
	47000	35×120	0.40	9.3	EKMH250LGB473MAC0N		47000	63.5×120	0.30	14.9	EKMH630LGC473MDC0N	
	56000	50×80	0.45	9.7	EKMH250LGC563MC80N		56000	63.5×120	0.30	16.3	EKMH630LGC563MDC0N	
	68000	50×100	0.45	11.2	EKMH250LGC683MCA0N		68000	76×120	0.35	18.4	EKMH630LGC683MEC0N	
	82000	50×100	0.50	11.2	EKMH250LGC823MCA0N	82000	76×140	0.40	20.0	EKMH630LGC823MEE0N		
	100000	50×120	0.50	14.8	EKMH250LGC104MCC0N	100000	76×140	0.50	20.0	EKMH630LGC104MEE0N		
	120000	63.5×100	0.65	14.9	EKMH250LGC124MDA0N	120000	89×140	0.60	21.8	EKMH630LGC124MFE0N		
	150000	63.5×120	0.65	17.9	EKMH250LGC154MDC0N	80	2200	35×50	0.15	2.4	EKMH800LGB222MA50N	
	180000	63.5×120	0.80	17.9	EKMH250LGC184MDC0N		2700	35×50	0.15	2.7	EKMH800LGB272MA50N	
	220000	76×120	0.85	21.3	EKMH250LGC224MEC0N		3300	35×50	0.15	3.0	EKMH800LGB332MA50N	
	270000	76×120	1.00	21.7	EKMH250LGC274MEC0N		3900	35×60	0.15	3.4	EKMH800LGB392MA60N	
	330000	76×140	1.20	23.4	EKMH250LGC334MEE0N		4700	35×60	0.15	3.7	EKMH800LGB472MA60N	
390000	89×140	1.50	24.9	EKMH250LGC394MFE0N	5600		35×80	0.15	4.5	EKMH800LGB562MA80N		
35	8200	35×50	0.30	3.3	EKMH350LGB822MA50N		6800	35×80	0.15	4.9	EKMH800LGB682MA80N	
	10000	35×50	0.30	3.6	EKMH350LGB103MA50N		8200	35×100	0.20	5.1	EKMH800LGB822MAA0N	
	12000	35×60	0.30	4.2	EKMH350LGB123MA60N		10000	35×120	0.20	6.1	EKMH800LGB103MAC0N	
	15000	35×60	0.30	4.7	EKMH350LGB153MA60N		12000	50×80	0.20	6.7	EKMH800LGC123MC80N	
	18000	35×80	0.30	5.7	EKMH350LGB183MA80N		15000	50×100	0.20	8.3	EKMH800LGC153MCA0N	
	22000	35×80	0.30	6.3	EKMH350LGB223MA80N		18000	50×120	0.20	9.9	EKMH800LGC183MCC0N	
	27000	35×100	0.30	7.5	EKMH350LGB273MAA0N		22000	50×120	0.20	11.0	EKMH800LGC223MCC0N	
	33000	35×120	0.30	9.0	EKMH350LGB333MCA0N		27000	63.5×100	0.25	11.4	EKMH800LGC273MDA0N	
	39000	50×80	0.35	9.2	EKMH350LGC393MC80N		33000	76×100	0.25	13.9	EKMH800LGC333MEA0N	
	47000	50×100	0.35	11.2	EKMH350LGC473MCA0N		39000	76×100	0.30	13.9	EKMH800LGC393MEA0N	



KMH Series

◆STANDARD RATINGS

WV (Vdc)	Cap (μF)	Case size φD×L(mm)	tanδ	Rated ripple current (Arms/105°C,120Hz)	Part No.	WV (Vdc)	Cap (μF)	Case size φD×L(mm)	tanδ	Rated ripple current (Arms/105°C,120Hz)	Part No.
80	47000	76 × 120	0.30	16.5	EKMH800LGC473MEC0N	250	330	35 × 50	0.15	0.9	EKMH251LGB331MA50N
	56000	76 × 120	0.30	18.1	EKMH800LGC563MEC0N		390	35 × 50	0.15	1.0	EKMH251LGB391MA50N
	68000	76 × 140	0.35	19.7	EKMH800LGC683MEE0N		470	35 × 50	0.15	1.1	EKMH251LGB471MA50N
	82000	89 × 140	0.40	22.1	EKMH800LGC823MFE0N		560	35 × 50	0.15	1.2	EKMH251LGB561MA50N
100	1800	35 × 50	0.10	2.7	EKMH101LGB182MA50N		680	35 × 60	0.15	1.4	EKMH251LGB681MA60N
	2200	35 × 50	0.10	3.0	EKMH101LGB222MA50N		820	35 × 80	0.15	1.6	EKMH251LGB821MA80N
	2700	35 × 60	0.10	3.5	EKMH101LGB272MA60N		1000	35 × 80	0.20	1.6	EKMH251LGB102MA80N
	3300	35 × 80	0.10	4.2	EKMH101LGB332MA80N		1200	35 × 80	0.20	1.8	EKMH251LGB122MA80N
	3900	35 × 80	0.12	4.2	EKMH101LGB392MA80N		1500	35 × 100	0.20	2.1	EKMH251LGB152MAA0N
	4700	35 × 100	0.12	5.0	EKMH101LGB472MAA0N		1800	35 × 120	0.20	2.5	EKMH251LGB182MAC0N
	5600	35 × 100	0.12	5.4	EKMH101LGB562MAA0N		2200	50 × 80	0.20	2.9	EKMH251LGC222MC80N
	6800	35 × 120	0.15	5.8	EKMH101LGB682MAC0N		2700	50 × 100	0.20	3.5	EKMH251LGC272MCA0N
	8200	50 × 80	0.15	6.4	EKMH101LGC822MC80N		3300	50 × 120	0.20	4.2	EKMH251LGC332MCC0N
	10000	50 × 100	0.15	7.8	EKMH101LGC103MCA0N		3900	50 × 120	0.20	4.6	EKMH251LGC392MCC0N
	12000	50 × 120	0.15	9.3	EKMH101LGC123MCC0N		4700	63.5 × 120	0.20	5.7	EKMH251LGC472MDC0N
	15000	50 × 120	0.15	10.4	EKMH101LGC153MCC0N		5600	63.5 × 120	0.20	6.3	EKMH251LGC562MDC0N
	18000	63.5 × 100	0.20	10.4	EKMH101LGC183MDA0N		6800	76 × 120	0.20	7.7	EKMH251LGC682MEC0N
	22000	63.5 × 120	0.20	12.5	EKMH101LGC223MDC0N		8200	76 × 120	0.20	8.4	EKMH251LGC822MEC0N
	27000	76 × 120	0.25	13.7	EKMH101LGC273MEC0N		10000	76 × 140	0.20	10.0	EKMH251LGC103MEE0N
	33000	76 × 120	0.25	15.2	EKMH101LGC333MEC0N		12000	89 × 140	0.20	11.9	EKMH251LGC123MFE0N
39000	76 × 140	0.30	16.1	EKMH101LGC393MEE0N	315	180	35 × 50	0.10	0.8	EKMH315LGB181MA50N	
47000	89 × 140	0.30	19.3	EKMH101LGC473MFE0N		220	35 × 50	0.10	0.9	EKMH315LGB221MA50N	
56000	89 × 140	0.30	21.1	EKMH101LGC563MFE0N		270	35 × 50	0.10	1.0	EKMH315LGB271MA50N	
160	560	35 × 50	0.15	1.2		EKMH161LGB561MA50N	330	35 × 50	0.10	1.1	EKMH315LGB331MA50N
	680	35 × 50	0.15	1.3		EKMH161LGB681MA50N	390	35 × 50	0.10	1.2	EKMH315LGB391MA50N
	820	35 × 50	0.15	1.4		EKMH161LGB821MA50N	470	35 × 60	0.10	1.4	EKMH315LGB471MA60N
	1000	35 × 50	0.15	1.6		EKMH161LGB102MA50N	560	35 × 60	0.10	1.5	EKMH315LGB561MA60N
	1200	35 × 60	0.15	1.9		EKMH161LGB122MA60N	680	35 × 80	0.10	1.7	EKMH315LGB681MA80N
	1500	35 × 60	0.15	2.1		EKMH161LGB152MA60N	820	35 × 80	0.15	1.7	EKMH315LGB821MA80N
	1800	35 × 80	0.15	2.5		EKMH161LGB182MA80N	1000	35 × 100	0.15	2.0	EKMH315LGB102MAA0N
	2200	35 × 80	0.15	2.8		EKMH161LGB222MA80N	1200	35 × 120	0.15	2.4	EKMH315LGB122MAC0N
	2700	35 × 100	0.15	3.3		EKMH161LGB272MAA0N	1500	50 × 80	0.15	2.7	EKMH315LGC152MC80N
	3300	35 × 120	0.15	3.8		EKMH161LGB332MAC0N	1800	50 × 100	0.15	3.3	EKMH315LGC182MCA0N
	3900	50 × 80	0.20	3.8		EKMH161LGC392MC80N	2200	50 × 120	0.15	4.0	EKMH315LGC222MCC0N
	4700	50 × 100	0.20	4.6		EKMH161LGC472MCA0N	2700	50 × 120	0.15	4.4	EKMH315LGC272MCC0N
	5600	50 × 100	0.20	5.1		EKMH161LGC562MCA0N	3300	63.5 × 100	0.15	5.1	EKMH315LGC332MDA0N
	6800	50 × 120	0.20	6.1	EKMH161LGC682MCC0N	3900	63.5 × 120	0.15	6.0	EKMH315LGC392MDC0N	
	8200	63.5 × 100	0.20	7.0	EKMH161LGC822MDA0N	4700	76 × 100	0.15	6.8	EKMH315LGC472MAE0N	
	10000	63.5 × 120	0.20	8.4	EKMH161LGC103MDC0N	5600	76 × 120	0.15	8.0	EKMH315LGC562MEC0N	
12000	76 × 100	0.20	9.4	EKMH161LGC123MEA0N	6800	76 × 130	0.15	9.2	EKMH315LGC682MED0N		
15000	76 × 120	0.20	11.4	EKMH161LGC153MEC0N	8200	89 × 140	0.15	11.4	EKMH315LGC822MFE0N		
18000	76 × 140	0.20	13.4	EKMH161LGC183MEE0N	10000	89 × 140	0.15	12.6	EKMH315LGC103MFE0N		
22000	89 × 140	0.25	14.5	EKMH161LGC223MFE0N	350	180	35 × 50	0.10	0.8	EKMH351LGB181MA50N	
27000	89 × 140	0.25	16.0	EKMH161LGC273MFE0N		220	35 × 50	0.10	0.9	EKMH351LGB221MA50N	
200	330	35 × 50	0.15	0.9		EKMH201LGB331MA50N	270	35 × 50	0.10	1.0	EKMH351LGB271MA50N
	390	35 × 50	0.15	1.0		EKMH201LGB391MA50N	330	35 × 50	0.10	1.1	EKMH351LGB331MA50N
	470	35 × 50	0.15	1.1		EKMH201LGB471MA50N	390	35 × 60	0.10	1.3	EKMH351LGB391MA60N
	560	35 × 50	0.15	1.2		EKMH201LGB561MA50N	470	35 × 60	0.10	1.4	EKMH351LGB471MA60N
	680	35 × 50	0.15	1.3		EKMH201LGB681MA50N	560	35 × 80	0.10	1.6	EKMH351LGB561MA80N
	820	35 × 50	0.15	1.4		EKMH201LGB821MA50N	680	35 × 80	0.15	1.6	EKMH351LGB681MA80N
	1000	35 × 60	0.15	1.7		EKMH201LGB102MA60N	820	35 × 100	0.15	1.8	EKMH351LGB821MAA0N
	1200	35 × 60	0.15	1.9		EKMH201LGB122MA60N	1000	35 × 120	0.15	2.2	EKMH351LGB102MAC0N
	1500	35 × 80	0.15	2.3		EKMH201LGB152MA80N	1200	50 × 80	0.15	2.4	EKMH351LGC122MC80N
	1800	35 × 80	0.15	2.5		EKMH201LGB182MA80N	1500	50 × 100	0.15	3.0	EKMH351LGC152MCA0N
	2200	35 × 100	0.15	3.0		EKMH201LGB222MAA0N	1800	50 × 120	0.15	3.6	EKMH351LGC182MCC0N
	2700	35 × 120	0.15	3.6		EKMH201LGB272MAC0N	2200	50 × 120	0.15	4.0	EKMH351LGC222MCC0N
	3300	50 × 80	0.15	4.1		EKMH201LGC332MC80N	2700	63.5 × 100	0.15	4.6	EKMH351LGC272MDA0N
	3900	50 × 100	0.15	4.9		EKMH201LGC392MCA0N	3900	76 × 120	0.15	6.7	EKMH351LGC392MEC0N
	4700	63.5 × 100	0.20	5.3	EKMH201LGC472MDA0N	5600	76 × 130	0.15	8.3	EKMH351LGC562MED0N	
	5600	63.5 × 100	0.20	5.8	EKMH201LGC562MDA0N	6800	76 × 140	0.15	9.5	EKMH351LGC682MEE0N	
6800	63.5 × 120	0.20	6.9	EKMH201LGC682MDC0N	8200	89 × 140	0.15	11.4	EKMH351LGC822MFE0N		
8200	63.5 × 120	0.20	7.6	EKMH201LGC822MDC0N	400	180	35 × 50	0.10	0.8	EKMH401LGB181MA50N	
10000	76 × 120	0.20	9.3	EKMH201LGC103MEC0N		220	35 × 50	0.10	0.9	EKMH401LGB221MA50N	
12000	76 × 120	0.20	10.2	EKMH201LGC123MEC0N		270	35 × 50	0.10	1.0	EKMH401LGB271MA50N	
15000	76 × 140	0.20	12.2	EKMH201LGC153MEE0N		330	35 × 60	0.10	1.2	EKMH401LGB331MA60N	
18000	89 × 140	0.25	13.1	EKMH201LGC183MFE0N		390	35 × 60	0.10	1.3	EKMH401LGB391MA60N	
250	270	35 × 50	0.15	0.8		EKMH251LGB271MA50N	470	35 × 80	0.10	1.4	EKMH401LGB471MA80N



**KMH Series**

◆ **STANDARD RATINGS**

WV (Vdc)	Cap (μF)	Case size φD×L(mm)	tanδ	Rated ripple current (Arms/105°C,120Hz)	Part No.
400	560	35×80	0.15	1.4	EKMH401LGB561MA80N
	680	35×100	0.15	1.7	EKMH401LGB681MAA0N
	820	35×120	0.15	2.0	EKMH401LGB821MAC0N
	1000	50×80	0.15	2.2	EKMH401LGC102MC80N
	1200	50×100	0.15	2.7	EKMH401LGC122MCA0N
	1500	50×120	0.15	3.3	EKMH401LGC152MCC0N

WV (Vdc)	Cap (μF)	Case size φD×L(mm)	tanδ	Rated ripple current (Arms/105°C,120Hz)	Part No.
400	2200	63.5×100	0.15	4.2	EKMH401LGC222MDA0N
	3300	63.5×120	0.15	5.5	EKMH401LGC332MDC0N
	4700	76×130	0.15	7.6	EKMH401LGC472MED0N
	5600	89×140	0.15	9.4	EKMH401LGC562MFE0N
	6800	89×140	0.15	10.4	EKMH401LGC682MFE0N

◆ **RATED RIPPLE CURRENT MULTIPLIERS**

● Frequency Multipliers

Rated voltage (Vdc)	Case diameter (mm)	Frequency (Hz)					
		50	120	300	1k	10k	50k
10 to 50	φ35 to φ89	0.95	1.00	1.03	1.05	1.09	1.12
	φ35	0.90	1.00	1.06	1.10	1.18	1.22
63 & 80	φ50 to φ89	0.95	1.00	1.03	1.05	1.09	1.12
	φ35	0.82	1.00	1.12	1.22	1.30	1.33
100	φ50	0.90	1.00	1.06	1.10	1.18	1.22
	φ63.5 to φ89	0.95	1.00	1.03	1.05	1.09	1.12
	φ35	0.80	1.00	1.19	1.34	1.46	1.52
160 to 250	φ50 & φ63.5	0.81	1.00	1.14	1.26	1.36	1.41
	φ76 & φ89	0.82	1.00	1.12	1.22	1.30	1.33
	φ35 to φ89	0.80	1.00	1.19	1.34	1.46	1.52